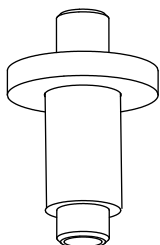


## 100.2CSA | Ceiling Mount Shower Arm - 2"

### SPECIFICATIONS:

- Solid Brass Construction
- With Flange
- Also available in 6" (100.6CSA), 8" (100.8CSA), 12" (100.12CSA) and 16" (100.16CSA) Versions



Legislation Compliance



ZeroDrip Technology



### Technical Diagram

